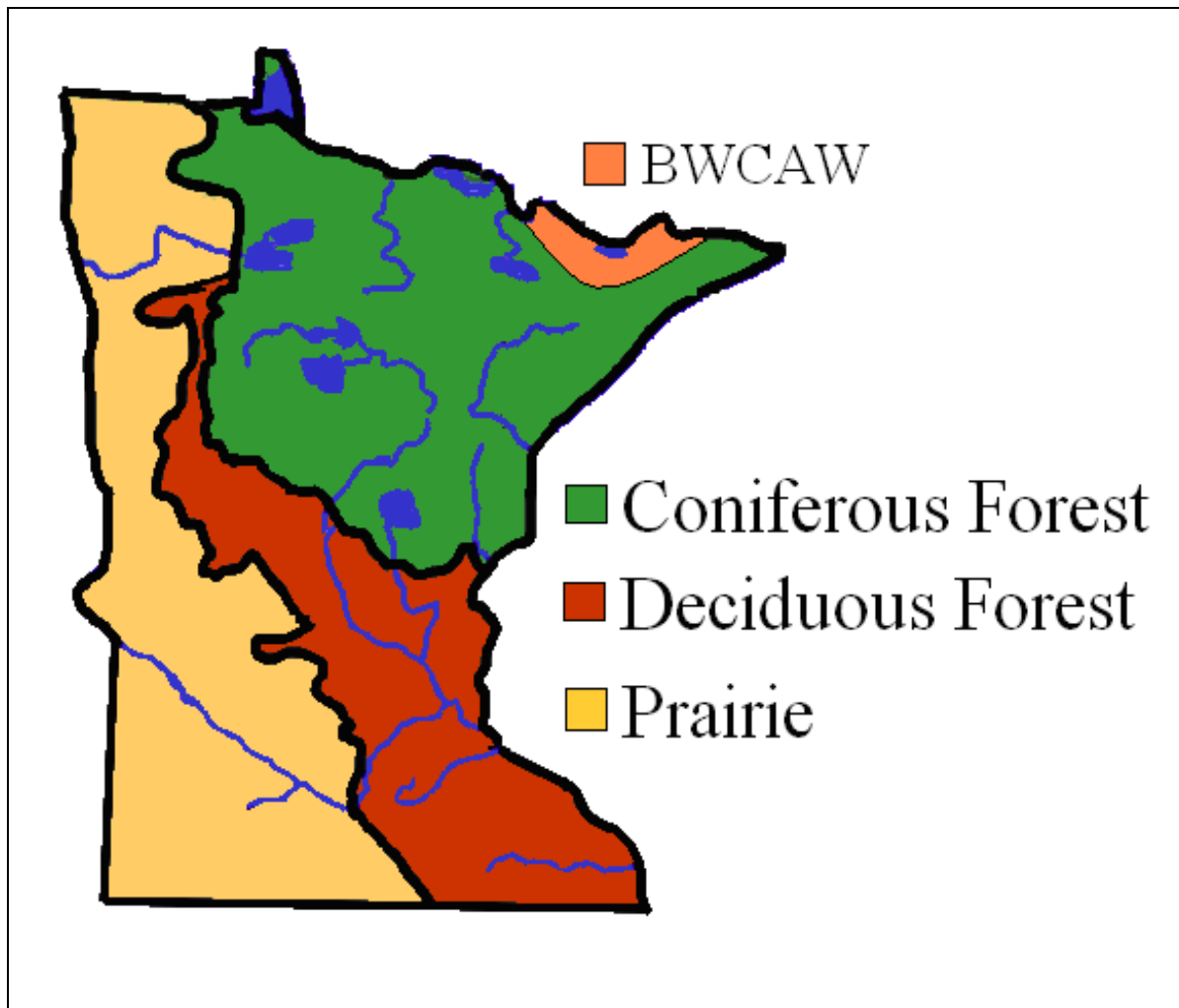


The Boundary Waters Canoe Area Wilderness (BWCAW) is the most popular and most visited wilderness in the US. It contains hundreds of pristine bedrock lakes surrounded by mature red and white pines in northeastern Minnesota. At 1.1 million acres in size, the Boundary Waters is the largest wilderness east of the Rockies and north of the Everglades.



Protecting the BWCAW has been a priority for the Izaak Walton League since the 1920s. In fact, the IWL is the only conservation organization that has fought every battle since the 1920s to protect this beautiful and popular area.



Photo By: Ken Harmon