



Timberlines

W. J. Breckenridge Chapter
Izaak Walton League
January/February 2012
www.breckenridgeikes.org



Coming Events

February

- 14 Board Meeting 7:30 pm
28 Social/Educational Meeting: 7:30 pm
*Dr. Lee Frelich, University of Minnesota
Fire in Forests of the BWCAW*

March

- 13 Board Meeting 7:30 pm
27 Social/Educational Meeting 7:30 pm

April

- 24 Social/Educational Meeting 7:30 p.m.
Alex Gehrig from Minnesota Waters

Upcoming

*August 25 - IWL 90th Anniversary
Celebration Holiday Inn Maplewood*

If you can provide light refreshments for one of our Tuesday meetings, please contact Barbara Franklin 763-657-1907 Or bbfrankli@gmail.com

February 21 - Tammy Halonen
March 20 -
Thank you!



Dr. Lee Frelich speaks February 28 7:30 p.m. at the Chapter House

Dr. Lee Frelich of the University of Minnesota will discuss the recent recurrence of forest fires in the Boundary Waters.

Several large fires have occurred in the BWCAW in recent years, after an 80 year lull in fire activity during the 20th Century. We will examine the 400 year history of fire in the BWCAW, compare these recent fires and their effects on forest regeneration with historical fires and look forward to likely changes in forests of the BWCAW.



SAVE A TREE!

Please let us know if you want to receive Timberlines by email. Contact Barb Franklin at 763-657-1907 or bbfrankli@gmail.com

Breckenridge Chapter IWLA 1-10-12 Meeting Notes

Board Members Attending: Steve Shaust, Bruce Hansen, Marlys Carls-Steiskal, Jim Arnold, Bill Barton, Wes Hendrickson, Roger Williams, Barb Franklin, Lorraine Spears, Dick Brown, Mark Gustafson, Larry Kennebeck

NOTE – ONE (1) BOARD POSITION OPEN –
Gretchen Sable considering Serving!

CALENDAR: (Breckenridge event dates in all CAPITAL LETTERS)

**January 21-22 Minnesota Division IWLA State
Meeting** at Breckenridge

JANUARY 29ND BRECKENRIDGE HOLIDAY
PARTY

FEBRUARY 14th BOARD OF DIRECTORS
MEETING

FEBRUARY 28th SOCIAL EDUCATIONAL
MEETING –Lee Frelich “BWCA Update”

MARCH 13TH BOARD OF DIRECTORS
MEETING

MARCH 27TH SOCIAL EDUCATIONAL
MEETING

**August 25th IWLA 90th Anniversary
Celebration** Holiday Inn Maplewood

Discussion of preparations for State Board Meeting - Dick, Jim & Judy will set up Friday evening. Wes will open up & get coffee going. Saturday – Wes will open building at 7:30AM - 9:30AM Coffee & Rolls Jim will pick up the rolls, Jim & Judy will fix Lunch, Steve will cook for Saturday evening (arriving ~1PM) Mark will help. 5 PM Dinner bake lasagna, Silent auction, Social Meeting, Sunday AM Coffee & Rolls, meeting done at Noon Lunch on your own. Darby Nelson will be presenting on his book “Love of Lakes” at 9:45 AM Saturday. The film “Island Treasure” at 6 PM Saturday. Steve will open up on Sunday. Help is always welcome for set up, coffee, lunches, dinner, program, & cleanup. Attendees will be asked for meal donations.

Holiday party 4 PM start, Dinner 5 PM, Program 6 PM Bring items for silent auction for scholarship fund before 4 PM – Jim & Judy will handle, Program is the restored Breckenridge Island Movie “Island Treasure” Contributions for

snacks, side dishes, & desserts appreciated. Steve will cook a turkey & stuffing, do punch, Vera will cook a ham. Roger will do sweet potatoes. Mark will do vegetables. Need help for decorations, set up, food, etc. for setup on Sunday morning at 9 AM. John has asked the Park Center string quartet to play - stay tuned. Bill will bring projector & computer for movie. \$5.00 per person to cover expenses.

90th IWLA Celebration - Each chapter to give 2 or 3 special auction items so think of some ideas! 30% of proceeds go to MN chapters, 30% to National, 30% to MN division. Programs, policy makers will be invited. Dinner, major speaker, probably ~\$25.00. Nathan Pruitt of National is working with us.

Population committee has not completed a resolution yet.

Dick brought up wolf trapping as part of wolf population control by the MN DNR. National policy supports “carefully regulated trapping as a valid economic use of wildlife populations as well as a means for controlling particular wildlife populations and specific nuisance animals.”

Dick brought up - discussion of Peter Sorenson’s idea for an invasive species research center at the U of M. Questions about use of legacy money for research.

Lorraine reported 109 members now – some 24 left to renew – second mailings have gone out. Barbara did this issue and will do the next two Timberlines – many thanks.

Steve suggested that we come up with a list of prime projects for the coming year. Dick & Mark will install the new dual flush toilets soon.

Treasurers report – Checking balance \$7803.78 Savings balance \$18062.42 we have spent ~\$2,684.52 more than income for the year on a 12 month average. Bruce asked what balances we wanted in the annual treasures report. We will ask at the state meeting about what other chapters do. Last meeting John Rust motioned that we publish an end of year status treasurer’s report with monthly income, expenditures, and

balances. Steve Schaust seconded. Passed unanimously. It is important to save deposit slips as they are the proof.

Barbara mentioned some difficulty at Office Depot with non-profit status – John Rust gave her our Office Depot ID card – Bill volunteered to check status online with Secretary of State: Minnesota Business Name **Izaak Walton League of America Dr. Walter J. Breckenridge Chapter**

Business Type Nonprofit Corporation (Domestic)
MN Statute 317A

File Number 2245-NP Home Jurisdiction
Minnesota

Filing Date 5/12/1936 Status Active / In Good Standing

Renewal Due Date: 12/31/2012

President Steve Schaust 8816 Irving Ave. North Brooklyn Park MN 55444 USA

Jim brought up the California Pizza* fundraiser promotion where we would give out coupons to turn in for 20% back to the chapter. *Arbor Lakes 12489 Elm Creek Blvd Jim motioned to try the promotion, Dick seconded. Passed unanimously.

Scholarship Committee – Materials will go out to schools soon. Second payments to go out in January.

Barbara is consolidating content on the website. The revised Breckenridge population resolution is now on the website. Barbara figured out how to put things in folders and get them on the site so things can be more organized.

Rentals – December best month for 2011, December 2012 looks good. Lots of use in January but we do not have many rentals. We need to un-decorate after the Holiday party on January 31st at 7 PM.

Bill Barton 1-10-12

Massive Pebble Mine In Alaska

By John Rust



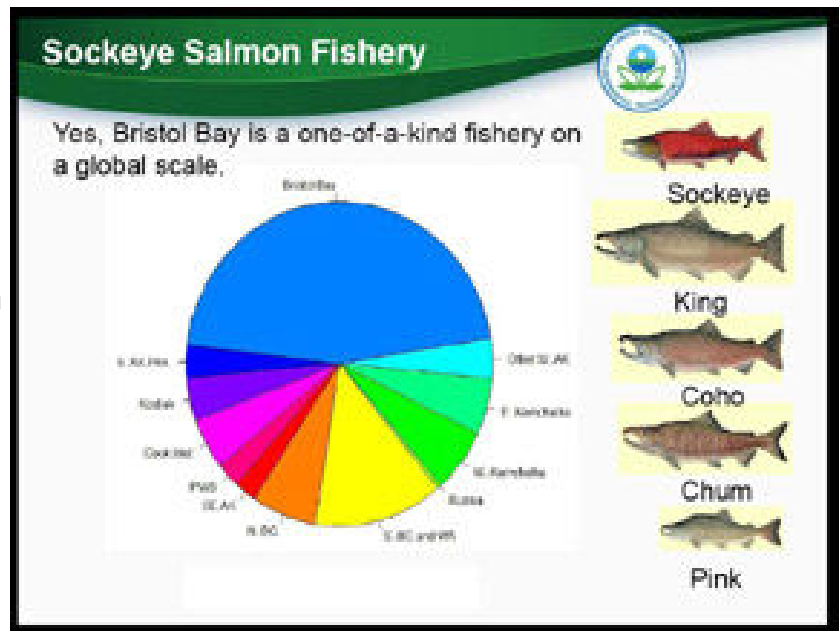
Global mining companies Northern Dynasty Minerals Ltd. (based in Canada) and Anglo American Plc (based in England) have an interest in creating and excavating massive gold and copper mines and dams at the headwaters of the world's largest salmon fishery in Alaska. If fully developed, the site could be the largest mineral extraction mine in the world. The mining companies say millions of ounces of gold and billions of pounds of copper could potentially be extracted. In July 2010 Northern Dynasty purchased an additional 23 square miles to add to their roughly 163 miles of mining claims. The current proposal involves both a large open pit mine, an underground mine, and the construction of two dams.

The potential for acid mine drainage leaking from the site could have potentially devastating effects on the pristine environment and wildlife of Bristol Bay. The Pebble Mine Partnership is proposing to hold mine tailings and toxic waste behind two enormous earthen dams. According to the filings with Alaska DNR, the project would store 2.5 billion tons of tailings behind the dams. About 3 percent of the tailings would be acid generating rock which must be permanently stored under water in perpetuity. The size of the dams built to hold this toxic waste is expected to be 740 feet tall and 4.3 miles long with a second dam to be 700 feet high and nearly 3 miles long. If developed, this would be the largest open pit mine in the world. The proposed large scale dams containing the toxic waste will be built in an area that is an active earthquake zone. One of the dams would be larger than the Hoover Dam. While mine operations might last several decades, mine waste would last for centuries requiring safety and containment measures to last equally long. The 2006 water right application projected 35 billion gallons of water per year would be drawn from key salmon spawning streams (more than the City of Anchorage uses each year).

(Continued on page 4)

(Continued from page 3)

The site sits near Iliamna Lake (Alaska's largest lake) and at the headwaters of the Nushagak and Kvichak Rivers which are known for all 5 species of salmon as well as rainbow trout, arctic char, pike, grayling and dolly varden. Subsistence, recreational hunting, fishing, and outdoor recreation occur throughout the area. Bristol Bay produces 30% of all US wild salmon and is the world's largest sockeye salmon fishery. Numerous wildlife species use this watershed including brown bears, wolves, caribou and birds. While the mine might create 400-500 jobs, it could also destroy the watershed that is the spawning ground for one of the last remaining areas for harvesting wild salmon.



According to a 2007 University of Montana study on the economics of wild salmon, nearly 7,000 jobs depend on the salmon fishery, worth nearly \$300 million per year. Breckenridge Chapter members Steve Schaust and John Rust have spent time hunting and kayaking in the area several times over the last 10 years.



Update on our Current Scholarship Recipients

By Jim Arnold

I think you'll enjoy reading about the latest exploits of a wonderfully talented group of students. Their interests in improving the environment are diverse, but all have a tremendous commitment to environmental causes. All of these scholarship recipients have expressed their appreciation for the support they receive from the Breckenridge Chapter.

Ruth Burke is an Osseo High School graduate currently in her senior year at the University of Minnesota. Her major is Applied Plant Science with a minor in Sustainable Agriculture. The main focus of her fall semester was a research project centered on Kura clover. Kura clover, a perennial clover legume used in forage pasture, shows promise as a longer-lived hardier alternative to other legumes. Ruth is currently in the final stages of editing before she sends her findings for publication. After graduation this spring, she will work as a junior scientist for the University. The following spring she plans to begin two years of service in the Peace Corps before attending graduate school.

Shaina Sabel is an Anoka High School graduate who will graduate this spring from South Dakota State University with majors in Agronomy and Environmental Management. She especially enjoyed two fall semester classes, Weed Science and Advanced Animal Nutrition. She wrote, "I enjoyed learning how utilizing crop rotations and tillage can reduce not only farmer costs in chemical, but also reduce environmental pollution." The Animal Nutrition class has caused her to consider potential graduate programs centered on increasing crop efficiency for humans and livestock. Away from the classroom Shaina continues to work for the Water Resources Institute and is an active member of the College of Agriculture and Biological Sciences Prexy Council (similar to student council).

William Risse, a graduate of Park Center High School, is completing his senior year at the

University of Wisconsin-Stevens Point and is considering his options for graduate school. His major is Land Use Planning with a minor in Soil Science, Geographical Information System and Spatial Analysis. Last semester William helped create a new campus organization, "Students for Wetland Awareness, Management and Protection." He also worked on an undergraduate research project analyzing the services green infrastructure provides to urban areas. Working as an individual and group tutor takes up some of his spare time.

Ellen Squires, a graduate of Andover High School, is a sophomore at St. Olaf College. She spent last summer as an intern at Cedar Creek Ecosystem Science Reserve where the big project concerned the impact of warming temperatures and increasing CO₂ concentrations on biodiversity. Working with U of M faculty and graduate students she got a great glimpse of academic research. Back at St. Olaf she continues her coursework towards a degree in Biology, Environmental Studies and Statistics. She is also working with food service to provide more sustainable options. More recently, Ellen spent much of January exploring the deserts of the Southwest as part of an off-campus biology course.

Kristen Peterson, a recent graduate of Maple Grove High School, said she had an amazing start to her college career at the University of Minnesota. Geology and environmental science classes were her favorite fall semester courses. The environmental science class allowed her to explore options for a variety of future careers in environmental science. Kirsten also continued her French studies and is now considered proficient in the language. Studying abroad is one of her goals. Her favorite fall activities, however, were away from the classroom. She joined MPIRG (Minnesota Public Interest Research Group) and the Ballroom Dance Club. With MPIRG she was involved with a campaign to ban plastic water bottles and Styrofoam on campus. Kirsten claims that a side benefit of ballroom dancing is improving balance needed in wading streams.

(Continued on page 6)

(Continued from page 5)

Karin Sather, a 2011 graduate of Champlin Park High School, began her freshman year at St. Olaf last fall. Since she plans to major in biology, it seems logical that the highlight of fall semester was a special opportunity, with her biology professor and a few upperclassmen, to get involved tagging saw whet owls. Kristen writes that, "Holding that owl was confirmation that my now officially declared biology major is one of those things that is just right." Kristen also joined the St. Olaf rowing team. She enjoyed the 6 a.m. practices on a quiet lake with the rising sun and now looks forward to the indoor season.

A Fun Way to Raise Funds

If you have been reading the minutes of the Breckenridge Chapter Board meetings you realize that we have not been keeping up with expenses the last 18 months or so. Our rental income is down. Although we are not in any major financial difficulties, and still have a healthy savings account, we feel it is important to look for other ways to raise funds.

Judy Arnold has suggested we try a fundraiser involving California Pizza Kitchen, a Maple Grove Restaurant. As explained in the accompanying flyers, on Thursday, March 1 for each customer presenting a Breckenridge Chapter flyer 20% of the total bill will be donated to the Chapter. Clip the flyers – use one yourself; give one to a friend! Obviously the more folks who eat at California Pizza Kitchen March 1 (open 11 a.m. to 9 p.m.) will raise more funds. Please note you do not have to be a member to participate. Spread the word and flyers to family and friends. If you need more flyers they are available on our web site, via email or at the Chapter House.

If this fund raiser is successful we will likely repeat it later in the year. If you have questions or suggestions, please contact Judy Arnold (763 560 8972 or jjarnold@q.com).

Join us at
California Pizza Kitchen
for a flavorful FUNdraising event!

Just bring in this flyer, present it to your server, and **20%** of your check will be donated to our organization. Purchases include dine-in, take-out, catering and all beverages!

Fundraiser in support of
Breckenridge Chapter of IWLA
Thursday, March 1, 2012

(All Day)

California Pizza Kitchen
The Shoppes at Arbor Lakes • 12489 Elm Creek Blvd
(Next to the AMC Theater)
763.424.4890

Go to cpk.com to view our pizzas, pastas, salads, appetizers & desserts. You can even order online!

Join the **CPK Adventure Club** at cpk.com and receive **\$5** off your next visit!



Eligible groups include non-profit schools and 501c organizations. Donation amount excludes proceeds from tax, gratuity, gift card and retail purchases. Valid for dine-in, take-out, online orders, catering or curbside service. Alcoholic beverages included. Not valid on delivery. Event proceeds void if flyers are distributed in or near the restaurant. Manager, please attach this flyer to the guest check.

Join us at
California Pizza Kitchen
for a flavorful FUNdraising event!

Just bring in this flyer, present it to your server, and **20%** of your check will be donated to our organization. Purchases include dine-in, take-out, catering and all beverages!

Fundraiser in support of
Breckenridge Chapter of IWLA
Thursday, March 1, 2012

(All Day)

California Pizza Kitchen
The Shoppes at Arbor Lakes • 12489 Elm Creek Blvd
(Next to the AMC Theater)
763.424.4890

Go to cpk.com to view our pizzas, pastas, salads, appetizers & desserts. You can even order online!

Join the **CPK Adventure Club** at cpk.com and receive **\$5** off your next visit!



Eligible groups include non-profit schools and 501c organizations. Donation amount excludes proceeds from tax, gratuity, gift card and retail purchases. Valid for dine-in, take-out, online orders, catering or curbside service. Alcoholic beverages included. Not valid on delivery. Event proceeds void if flyers are distributed in or near the restaurant. Manager, please attach this flyer to the guest check.

*** THE HOLIDAY PARTY ***

Thank you to the local merchants who made donations to our silent auction:

Arbor Lakes 16 Movie Theater	2575 Elm Creek Blvd., Maple Grove
Biaggi's Ristorante Italiano	12051 Elm Creek Blvd., Maple Grove
Brooklyn Park Liquor	8520 Edinburgh Center Dr, Brooklyn Park
California Pizza Kitchen	12489 Elm Creek Blvd., Maple Grove
Claddaugh's Irish Pub	7890 Main Street, Maple Grove
Girvan Grille (Edinburgh Golf Course).....	8700 Edinbrook Crossing, Brooklyn Park
Hair Excellence	11540 Bass Lake Rd Suite 5, Plymouth
Half Price Books.....	5600 West Broadway, Crystal
Home Depot (Northtown)	99 Northtown Dr., Blaine
Noble Parkway Mobil.....	9500 Noble Parkway, Brooklyn Park
Papa John's Pizza.....	4610 85 th Ave N, Brooklyn Park
Peppertree Hair Salon.....	2717 Winnetka Ave, New Hope
Sindi's Sweet Shop	11540 Bass Lake Rd Suite 40, Plymouth
Taco Bell.....	8530 Edinburgh Center Dr., Brooklyn Park
Three Squares Restaurant.....	12690 Arbor Lakes Pkwy, Maple Grove
Trader Joes.....	12105 Elm Creek Blvd, Maple Grove
The UPS Store.....	6066 Shingle Creek Parkway, Brooklyn Center
VanStrand Hair Salon.....	6076 Shingle Creek Parkway, Brooklyn Center



And, to the members and friends of the Chapter who donated auction items:

Judy & Jim Arnold
Dick & Vera Brown
Dell & Linda Erickson
Wes & Judy Hendrickson
Dan Melberg
Hans Nielsen
Charlie & Marlyns Taflin



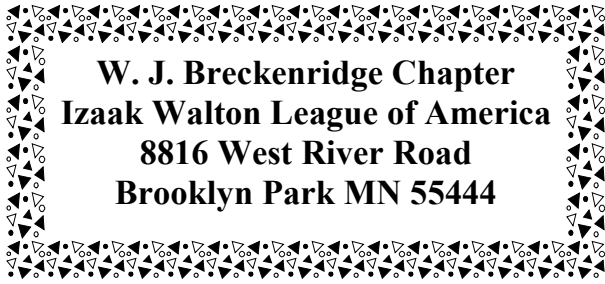
Special thanks to:

The Program

Dick and Vera Brown who cooked the ham, the Schaust family who baked the turkey and dressing and also provided the punch, Jim and Judy Arnold along with Diane Sannes and Arlene Swanson for organizing the silent auction, to the many folks who provided side dishes and desserts and Tom Ward who provided the wonderful background music on his dulcimer.

In addition to providing a wonderful social event for the 45 folks who attended, we again raised more than \$700 for the Chapter's scholarship fund.

The evening concluded with a viewing of a new and improved version of "Island Treasure." This film, made by Dr. Breckenridge over 50 years ago, has been enhanced with the help of the Bell Museum and modern technology. Among Breck's many talents was his ability to tell a story through his nature photography. For the Breckenridge Chapter, an important part of his legacy is this unique Mississippi River Island that has remained in its natural state many years after he first visited it.



Please note:

This issue and the following issue (**Feb/Mar**) of ***Timberlines*** will be edited by Barbara Franklin while our regular editor, Marlys Carls-Steiskal, is on vacation. Please send contributions to: bbfrankli@gmail.com. Deadline is the last day of the month.

Kicking Off the 2012-13 Scholarship Program

By Jim Arnold

The Breckenridge Chapter recently sent scholarship application materials to local schools and posted the 2012-13 application on our web site. This will be the fourteenth year our chapter has made available \$500 scholarships to high school seniors and/or current college undergraduates. Thus far fifty-four scholarships totaling \$27,000 have been awarded to local students with a strong interest in, and a commitment to, environmental causes.

Please share this information with students who might be interested or have them visit the Chapter website www.breckenridgeikes.org. If you have questions regarding the scholarship program please contact one of the committee members: Jim Arnold, Judy Arnold, Melissa Sonnenberg or Charlie Taflin.