



TIMBERLINES



W. J. Breckenridge Chapter
Izaak Walton League
April 2026

www.breckenridgeikes.org

Coming Events April 2026

- 14 Board of Directors Meeting 7 pm
- 25 State IWLA Meeting (Owatonna)
- 28 Social Educational Meeting 7:30 pm
Bruce Carlson, Minnesota Biological Survey History and Future Plans

May 2026

- 3 Pancake Breakfast 8 am-1 pm
- 12 Board of Directors Meeting 7 pm
- 26 Social Educational Meeting 7:30 pm
“Cranes over Minnesota” (International Crane Foundation)

June 2026

- 9 Board of Directors Meeting 7 pm
- 23 Social Educational Meeting 7:30 pm
Bruce Anderson, DNR
The Loss of Wildlands in the Lower 48 and Minnesota Since European Settlement

Social Educational Meeting:
Tuesday, April 28 7:30 pm
Bruce Carlson, Supervisor:
Minnesota Biological Survey

The Minnesota Biological Survey collects, interprets, and delivers data on the distribution and ecology of native animals, plants, and ecological communities to support the protection and conservation of biological diversity.



Bruce Carlson has been with the Minnesota DNR since 1997 where he spent 20 years as a plant ecologist/botanist with the MN Biological Survey (MBS) based in northern Minnesota. Since

2015, he has been the MBS Program Supervisor based out of St. Paul where he manages MBS budgets, priorities, and staff to survey and monitor native and rare biodiversity and ecological systems. Bruce’s background and professional experience is based in extensive field work documenting native plant communities and rare plant species, ecological mapping, and collaborative natural resource and conservation planning.

Bruce will talk about the history and establishment of a statewide biological survey in Minnesota and the methods and results of the 35-year MN County Biological Survey project. He will speak about the evolution of that project into the modern-day Minnesota Biological Survey program by highlighting some of the exciting and important work currently happening in MBS.



Izaak Walton League, Breckenridge Chapter
Defenders of Soil, Air, Woods, Waters and Wildlife



Pancake
Breakfast



Sunday, May 3, 2026

8 am-1 pm

Adults \$10.00 Children \$5.00

www.breckenridgeikes.org

Raffle \$2

Breckenridge Chapter House
8816 West River Road
Brooklyn Park, MN 55444

Sulfate in the Rainy River Headwaters

We are proud to be part of an organization like the Izaak Walton League whose members in the past have been key players in the struggle to protect our precious boundary waters wilderness. The members included, from the very beginning, our founder, Will Dilg, canoeists like Ernest Oberholzer and Sigurd Olson who fought to stop logging, hydroelectric dams, mining, roads, aircraft and other motorized access. The decades long battle by “Ikes” such as “Bud” Heinselmann, Arthur Carhart, Aldo Leopold, Bill Berg and Dave Zentner, continues today.

One of our chapter members, March speaker Matt Norton, has dedicated himself to the cause, and presented a talk on tracing the sulfate pollution downstream from existing tailings piles in the Rainy River watershed. (See map on following page.) Sulfate triggers the release of sulfuric acid and heavy metals, and converts mercury into toxic methylmercury that accumulates in fish.

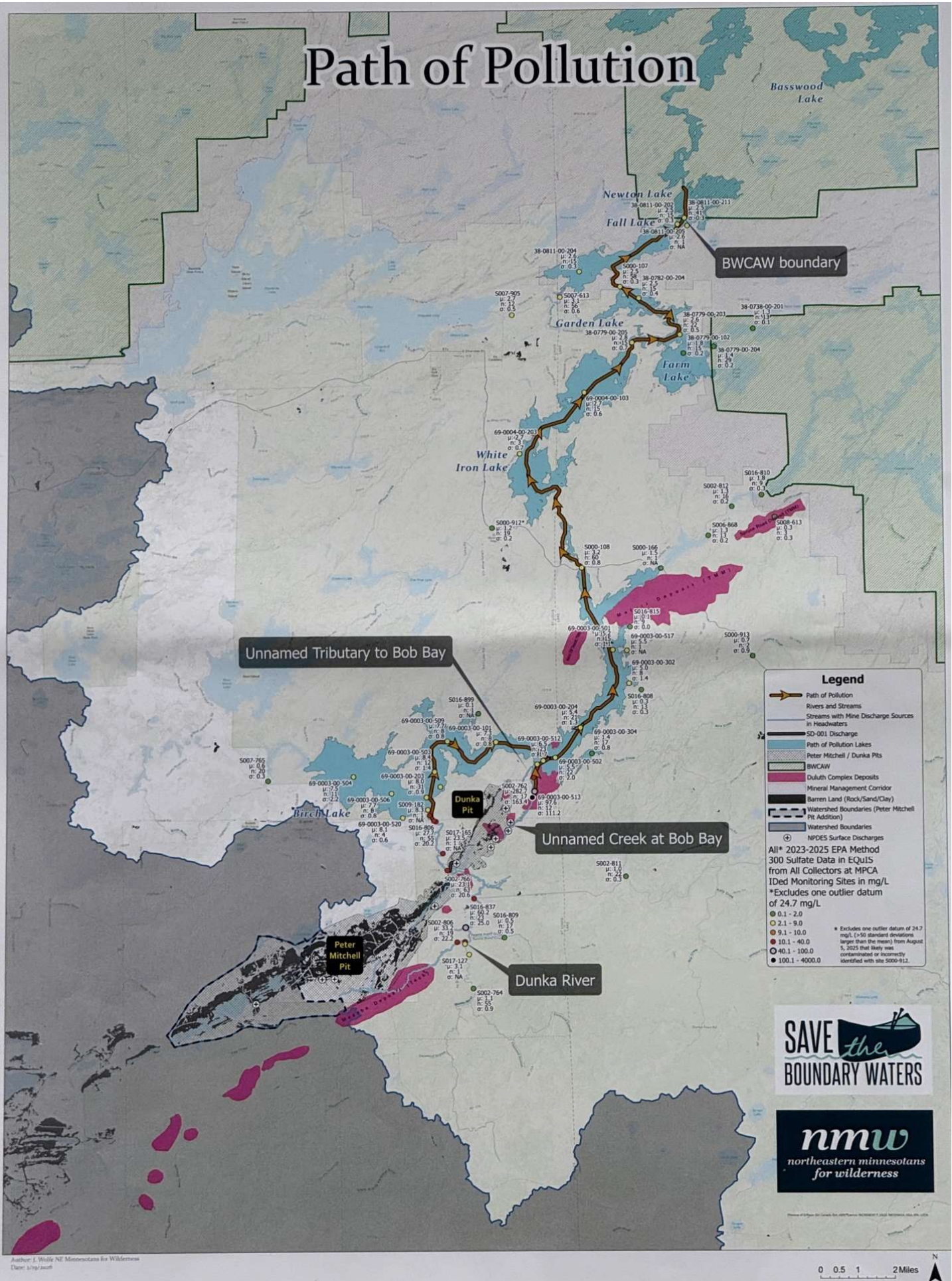
Matt detailed the process of the ongoing rigorous scientific monitoring he has been leading. The data which documents the pollution is being shared with the Minnesota Pollution Control Agency and will hopefully play a part in prohibiting sulfide-ore mining in the Rainy River watershed upstream of the BWCAW.



Speaking is our member Matt Norton, Policy & Science Director for Northeastern Minnesotans for Wilderness (NMW) and Save the Boundary Waters, and oversees NMW’s water monitoring program.

- | | |
|----|---------------------------------------|
| 5. | Marsh Maarigolds in Wild Ginger patch |
| 4. | Canadian White Violet |
| 3. | Virginia Bluebell |
| 2. | Large flowered Bellwort |
| 1. | Jack-in-the-Pulpit |

Path of Pollution



Legend

- Path of Pollution
- Rivers and Streams
- Streams with Mine Discharge Sources in Headwaters
- SD-001 Discharge
- Path of Pollution Lakes
- Peter Mitchell / Dunka Pits
- BWCAW
- Duluth Complex Deposits
- Mineral Management Corridor
- Barren Land (Rock/Sand/Clay)
- Watershed Boundaries (Peter Mitchell Pit Addition)
- Watershed Boundaries
- NPDES Surface Discharges

All* 2023-2025 EPA Method 300 Sulfate Data in EQUIS from All Collectors at MPCA IDED Monitoring Sites in mg/L

- *Excludes one outlier datum of 24.7 mg/L
- 0.1 - 2.0
- 2.1 - 9.0
- 9.1 - 10.0
- 10.1 - 40.0
- 40.1 - 100.0
- 100.1 - 4000.0

* Excludes one outlier datum of 24.7 mg/L (±50 standard deviations larger than the mean) from August 5, 2025 that likely was contaminated or incorrectly identified with site 5000-912.

SAVE the BOUNDARY WATERS

nmw
northeastern minnesotans for wilderness

Lights Out for the Birds!

By Molly Kirk, Virginia DWR

Fall and spring are the times when migratory birds take to the skies to transition between summer breeding grounds and areas where they winter.

There's a vast network of migratory flyways over the United States, and while in route north or south, migratory birds can encounter some challenges.

One of those is light pollution. Artificial light, whether from individual structures or cities, can attract birds who migrate through the night hours. The artificial light confuses and disorients birds, causing them to circle for extended periods of time, which uses up vital stores of energy they need to migrate long distances successfully. Birds disoriented by lights can also crash into windows or collide with buildings, causing injury or death. Eliminating or reducing unnecessary lighting can significantly reduce bird collisions, while

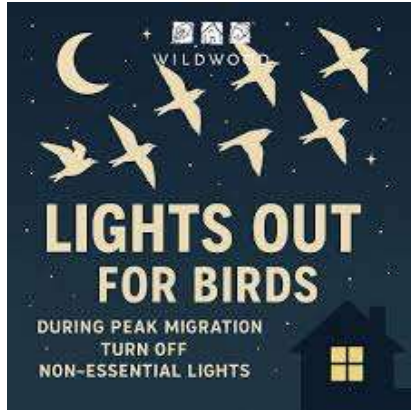
simultaneously reducing energy demands and costs to building owners. Reducing nighttime lighting is especially important during peak bird migration and periods of inclement weather.

There are a number of organizations promoting the reduction of artificial light during bird migration periods, including the U.S. Fish and Wildlife Service, Audubon, and Dark Sky International. Certainly, cities are a major source of light pollution, and individuals are limited in their ability to affect that, but Audubon's [Lights Out Network](#) has information about how to communicate about the issue with local elected officials or building managers.

What Can Homeowners Do?

1. Turn off your interior and exterior building lights during peak migration seasons. ([BirdCast](#) is a good resource for this.)
2. If you can't turn off all lights, consider turning off exterior lights—the flood lights that face up into the sky and rooftop lights that illuminate the surrounding landscape, or change your motion sensors to only be active when people are present.
3. Follow Dark Sky International's [Five Principles for Responsible Outdoor Lighting](#)
4. [Advocate for lights out](#) in urban areas.

Below are a few photos of spring ephemerals on the Chapter property. How many do you know
Answers on p. 6



1.



2.



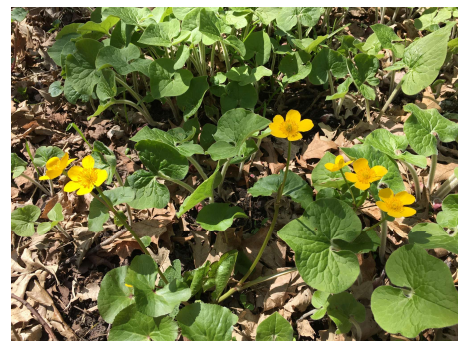
3.



4.



5.



5

W. J. Breckenridge Chapter
Izaak Walton League of America
8816 West River Road
Brooklyn Park MN 55444



If you would like to submit an article for the Timberlines, please send it to
Barbara Franklin at: bbfrankli@gmail.com
Deadline is the First Day of each month.

All articles in this newsletter do not necessarily reflect the position of the Breckenridge Board of Directors. The Editor reserves the right to edit material as necessary.

Chapter Loses Longtime Member Jean Fraley



Age 84 of Brooklyn Park, MN died peacefully on February 14, 2026 in memory care at St. Therese of Oxbow Lake. She is survived by her husband of 60 years, John; sons Mark (Marion) and Paul (Mary); grandchildren James, Michael, and Matthew. Jean was born September 27, 1941 in La Crosse, WI to Alger and Geraldine (Warren) Seils. She graduated from La Crosse Central High School in 1959 and Viterbo College in 1962 where she completed nursing training. Jean was a highly talented and compassionate RN and health educator. Early in her career, she worked at the Wisconsin Diagnostic Center in Madison as a head nurse for autistic children and, subsequently, at Northwestern Hospital in Minneapolis where she taught mental health to student nurses. Later, Jean was employed by Holokleria Clinic in Coon Rapids before serving as a parish nurse and spiritual director within the United Methodist Church where she touched the lives of many in the community. She also participated in several

international mission trips to improve schools. Jean loved music and played the guitar. She was an avid gardener and enjoyed fishing, hiking, cycling, and bird watching. She cherished time spent with family and friends.

A celebration of her life will be held at 11 am, with visitation at 10 am, on May 15th at Osseo United Methodist Church. Lunch will follow the service. In lieu of flowers, memorials may be directed to the church.

1. Jack-in-the-Pulpit
2. Large flowered Bellwort
3. Virginia Bluebell
4. Canadian White Violet
5. Marsh Maarigolds in Wild Ginger patch